

Marion Cilker Conference 2020  
*Visual Arts Integration Across Disciplines*  
Images  
Ruby Ming



*Rosa Parks*, 1983

Marshall D. Rumbaugh (American, born 1948)

Painted limewood. With Base: 39 x 38 x 12 in.

National Portrait Gallery, Smithsonian Institution, NPG.83.163

[https://collections.si.edu/search/detail/edan\\_mdm:npg\\_NPG.83.163](https://collections.si.edu/search/detail/edan_mdm:npg_NPG.83.163)



*Washington Crossing the Delaware*, 1851.

Emanuel Leutze (American, 1816–1868).

Oil on canvas. 149 x 255 in.

Metropolitan Museum, 97.34.

<https://www.metmuseum.org/art/collection/search/11417>



*We crossed the River at McKonkey's Ferry 9 miles above Trenton ... the night was excessively severe ... which the men bore without the least murmur...- Tench Tilghman, 27 December 1776 / Struggle Series - No. 10: Washington Crossing the Delaware.* Date: 1954

Jacob Lawrence (American, 1917–2000)

Egg tempera on hardboard. 11-13/16 x 15 -15/16 in.

Metropolitan Museum, 2003.414 © 2020 Artists Rights Society (ARS), NY

Metropolitan Museum, 2003.414 © 2020 Artists Rights Society (ARS), NY

<https://www.metmuseum.org/art/collection/search/493552>



*George Washington Carver Crossing the Delaware: Page from an American History Textbook*, 1975

Robert Colescott (American, 1925-2009)

Acrylic on canvas. 84 x 108 in.

Private collection, Saint Louis

© 2017 Estate of Robert Colescott / Artists Rights Society (ARS), New York,

photo: Jean Paul Torno

<http://figuringhistory.site.seattleartmuseum.org/robert-colescott/george-washington-carver-crossing-delaware-page-american-history-textbook/>



*Shimomura Crossing the Delaware*, 2010.

Roger Shimomura (American, born 1939).

Acrylic on canvas. 3 canvas panels, 72 x 144 in.

National Portrait Gallery, Smithsonian Institution; NPG.2012.71

© Roger Shimomura

[https://npg.si.edu/object/npg\\_NPG.2012.71](https://npg.si.edu/object/npg_NPG.2012.71)



*Columbus Day Painting*, 2014  
Titus Kaphar (American, b.1976)  
Oil and mixed media on canvas. 67 3/4 x 90 3/4 x 4 in.  
Orlando Museum of Art. On long-term loan from Dr. Robert B. Feldman.  
[https://omart.org/artwork/detail/exhibitions/who we are now/5/](https://omart.org/artwork/detail/exhibitions/who_we_are_now/5/)



*Landing of Columbus*, 1847  
John Vanderlyn (American, 1775-1852)  
Oil on canvas. 12 x 18 feet  
U.S. Capitol Rotunda, one of four scenes of early exploration  
<https://www.aoc.gov/explore-capitol-campus/art/landing-columbus>



*Mounted Indians Carrying Spears, Rocky Bear and Red Shirt*, 1890  
Rosa Bonheur (French, 1822–1899)  
Oil on board. 13.7 in x 19 in  
Buffalo Bill Center of the West. 8.04.6  
<https://centerofthewest.org/2020/06/19/points-west-out-west-rosa-bonheur-oscar-wilde/>



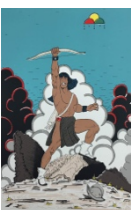
Unknown title (possibly Pueblo Runner), c.2000-2015  
Jason Garcia, Okuu Pin (“Turtle Mountain”), Khapo Owinge Pueblo Tewa, Santa Clara, New Mexico, born 1973  
Traditional clay tile process, mineral pigments, traditional outdoor firing methods  
© Jason Garcia <https://indiancountrytoday.com/archive/native-american-comics-creator-showcase-jason-garcia-s-tewa-ales-sTuliwwejUu0vI6Ebh4vPQ>



*Warrior Maiden Muse* from the Tewa Tales of Suspense series, 2018  
Jason Garcia, Okuu Pin, Khapo Owinge Pueblo Tewa, New Mexico, born 1973  
Hand processed clay tile, mineral pigments, using Pueblo outdoor firing methods.  
© Jason Garcia  
<http://firstamericanartmagazine.com/warrior-maiden/>



*“Tewa Tales of Suspense #5 – Behold...Po’Pay!”*  
Jason Garcia, Okuu Pin, Khapo Owinge Pueblo Tewa, New Mexico, born 1973  
Traditional clay tile process, mineral pigments, traditional outdoor firing. 10 in x 13¼ in  
© Jason Garcia  
<http://www.okuupin.com/portfolio>



*'VICTORY' TEWA TALES OF SUSPENSE!* Edition of 15  
Jason Garcia, Okuu Pin, Khapo Owinge Pueblo Tewa, New Mexico, born 1973  
Serigraph. 14 in x 20 in  
© Jason Garcia  
<https://swaia.org/exhibitors/2020/jason-garcia/>



*Winter Woman* (22/40), 2020

Jason Garcia, Okuu Pin, Khapo Owinge Pueblo Tewa, New Mexico, born 1973  
11 color serigraph. 15.50 x 10.50 in

© Jason Garcia

<https://hechoamano.org/art/winter-woman-by-jason-garcia>



*#ThatGoodLightTho'*

Jason Garcia, Okuu Pin, Khapo Owinge Pueblo Tewa, New Mexico, born 1973  
Traditional clay, mineral pigments, traditional outdoor firing. 7" x 9"

© Jason Garcia

<https://kinggalleries.com/product/garcia-jason-thatgoodlighttho-tile/>



*Beans Again*, undated

Jason Garcia, Okuu Pin, Khapo Owinge Pueblo Tewa, New Mexico, born 1973  
Traditional clay, mineral pigments, traditional outdoor firing.

© Jason Garcia [https://www.santafenewmexican.com/pasatiempo/art/challenging-expectations-laughter-and-resilience-explores-humor-in-native-art/article\\_1824b760-fc37-11e9-be60-a7e82b7d2ac1.html](https://www.santafenewmexican.com/pasatiempo/art/challenging-expectations-laughter-and-resilience-explores-humor-in-native-art/article_1824b760-fc37-11e9-be60-a7e82b7d2ac1.html)



*Pueblo Legoland*

Jason Garcia, Okuu Pin, Khapo Owinge Pueblo Tewa, New Mexico, born 1973  
Traditional clay tile, mineral pigments, traditional outdoor firing. 9" w x 10" h

© Jason Garcia

<http://www.okuupin.com/portfolio>



*Sunday Morning in the Mines*, 1872.

Charles Christian Nahl (American, 1818–1878)

Oil on canvas, 72 in. x 108 in.

Crocker Art Museum, E. B. Crocker Collection, 1872.381.

<https://www.crockerart.org/collections/american-art-before-1945/artworks/sunday-morning-in-the-mines-1872>



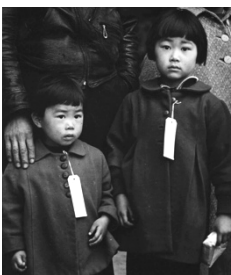
*Miners in the Sierras*, 1851-1852

Charles Christian Nahl and August Wenderoth

Oil on canvas. 54 1/4 x 66 7/8 in. (137.7 x 169.8 cm)

Smithsonian American Art Museum. 1982.120

<https://americanart.si.edu/artwork/miners-sierras-18174>



*Two children of the Mochida family who, with their parents, are awaiting evacuation bus. Centerville, CA, May 8, 1942 (or: Japanese Children with Tags, Hayward, CA)*

Dorothea Lange (American, 1895-1965)

Gelatin silver print. 14 in x 11 in

Oakland Museum of Calif. A82.83.6

<https://dorothealange.museumca.org/image/two-children-of-the-mochida-family-who-with-their-parents-are-awaiting-evacuation-bus/A82.83.6/>



*Hayward, California, Two Children of the Mochida Family who, with Their Parents, Are Awaiting Evacuation, May 1942*  
Dorothea Lange (American, 1895-1965)  
Photograph  
World Digital Library  
<https://www.wdl.org/en/item/2736/>



*Hayward, California. Two children of the Mochida family who, with their parents are awaiting evacuation bus. The youngster on the right holds a sandwich given her by one of a group of women who were present from a local church. The family unit is kept intact during evacuation and at War Relocation Authority centers where evacuees of Japanese ancestry will be housed for the duration. 8 May 1942*  
Dorothea Lange (American, 1895–1965)  
Photograph

National Archives at College Park. National Archives and Records Administration, NAID 537506.  
<https://catalog.archives.gov/id/537506>



Series: *The Sun Also Rises*  
Hung Liu (American, born 1948)  
Ensemble of digital prints, wood, aluminum, oil on canvas  
© Hung Liu  
<http://www.hungliu.com/the-sun-also-rises.html>



*For Dorothea Lange, from Mistaken Identities series, Edition: 45. 2005*  
Roger Shimomura (American, born 1939)  
5 Color Lithograph. Paper: Arches Cover, White. Image Size: 10.5 x 9 in  
© Roger Shimomura  
<http://www.lawrencelitho.com/portfolio-item/mistaken-identities-2005/>



*For Hatate Family, Mistaken Identities series, Edition: 45. 2005*  
Roger Shimomura (American, born 1939)  
5 Color Lithograph, ink on paper, 10.5 x 9 in.  
© Roger Shimomura  
<http://www.lawrencelitho.com/portfolio-item/mistaken-identities-2005/>



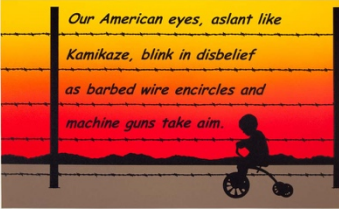
*For Masao Mori, Mistaken Identities series, Edition: 45. 2005*  
Roger Shimomura (American, born 1939)  
5 Color Lithograph, ink on paper, 10.5" x 9"  
© Roger Shimomura  
<http://www.lawrencelitho.com/portfolio-item/mistaken-identities-2005/>



*AMERICAN CITIZEN #1, Edition of 18. 2006*  
Roger Shimomura (American, born 1939)  
Lithograph. 16 x 12 inches.  
© Roger Shimomura  
[https://www.gregkucera.com/shimomura\\_prints.htm](https://www.gregkucera.com/shimomura_prints.htm)



*AMERICAN GUARDIAN*, Edition of 30. 2007  
Roger Shimomura (American, born 1939)  
7-color lithograph. 27 x 39 in  
© Roger Shimomura  
[https://www.gregkucera.com/shimomura\\_prints.htm](https://www.gregkucera.com/shimomura_prints.htm)



*THE CAMPS* from *NISEI TRILOGY*, Edition of 50. 2015  
Roger Shimomura (American, born 1939)  
Lithograph. 18.5 x 27 inches.  
© Roger Shimomura  
[https://www.gregkucera.com/shimomura\\_prints.htm](https://www.gregkucera.com/shimomura_prints.htm)



*THE ATTACK* from *NISEI TRILOGY*, Edition of 50. 2015  
Roger Shimomura (American, born 1939)  
Lithograph. 18.5 x 27 inches.  
© Roger Shimomura  
[https://www.gregkucera.com/shimomura\\_prints.htm](https://www.gregkucera.com/shimomura_prints.htm)



*RETURN HOME* from *NISEI TRILOGY*, Edition of 50. 2015  
Roger Shimomura (American, born 1939)  
Lithograph. 18.5 x 27 inches.  
© Roger Shimomura  
[https://www.gregkucera.com/shimomura\\_prints.htm](https://www.gregkucera.com/shimomura_prints.htm)



Jason Garcia  
<https://kinggalleries.com/brand/garcia-jason/>